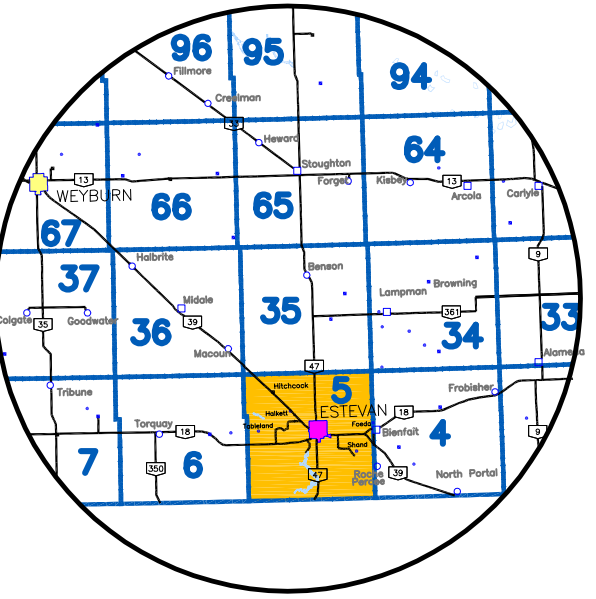


SURROUNDING AREA



REEVE - JASON LEBLANC
COUNCILLORS
DIV. 1- LORNE JAHN
DIV. 2- DONALD HILSTROM
DIV. 3- KEVIN DAoust
DIV. 4- JAMES TROBERT
DIV. 5- RAMONA DUKART
DIV. 6- STEVE SMITH

RURAL MUNICIPALITY OF ESTEVAN No. 5

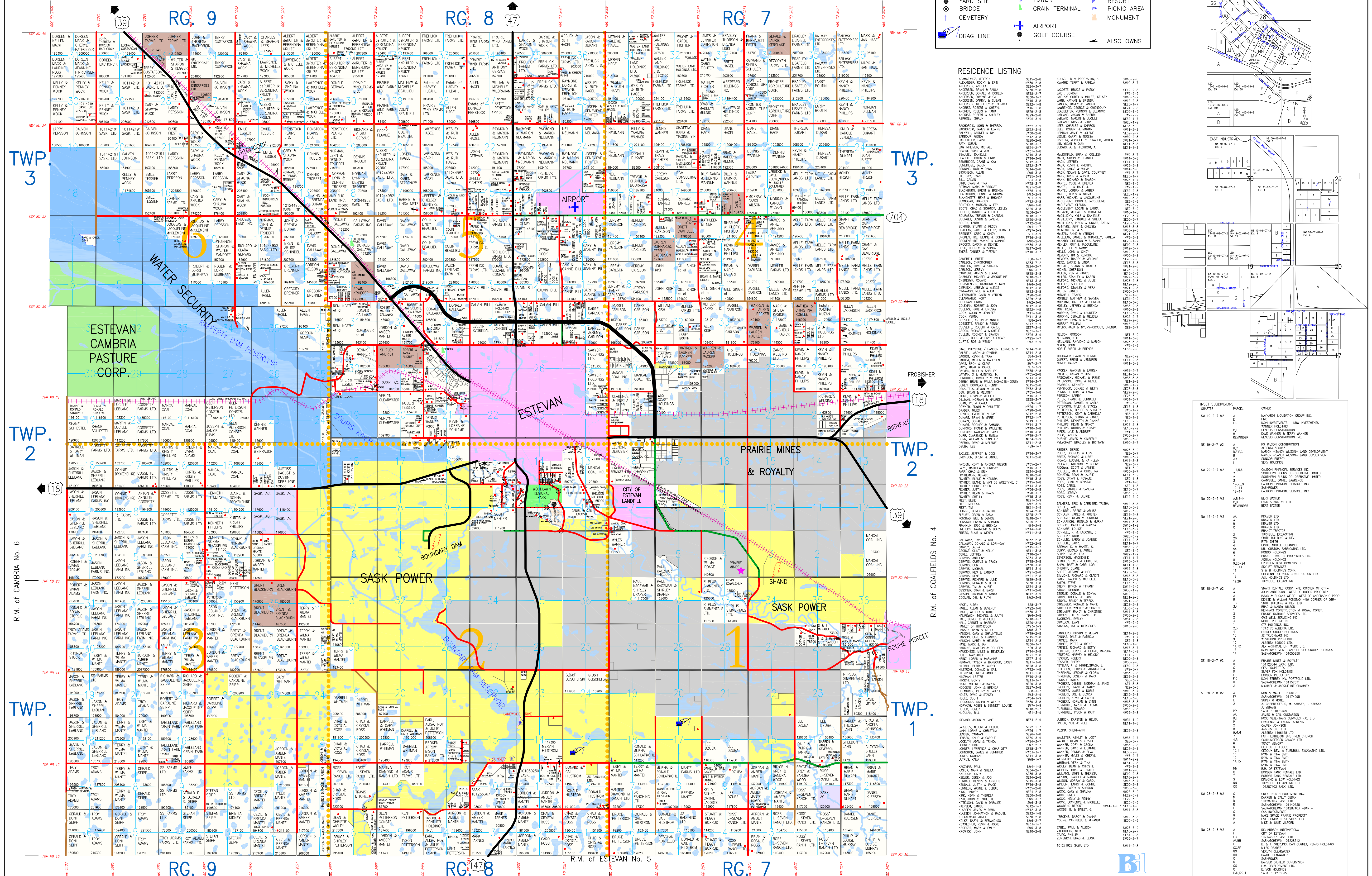
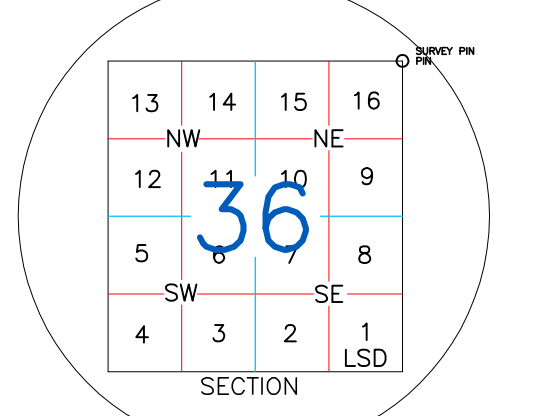
R.M. of BENSON No. 35

West of the 2nd

#1-322 4th Street
Estevan, Sask.
S4A 0T8
Ph: (306)634-2222
Fx: (306)634-2223
Email: administrator@rmestevan.ca
website: rmestevan.ca
Admin: MICHELLE DICKIE

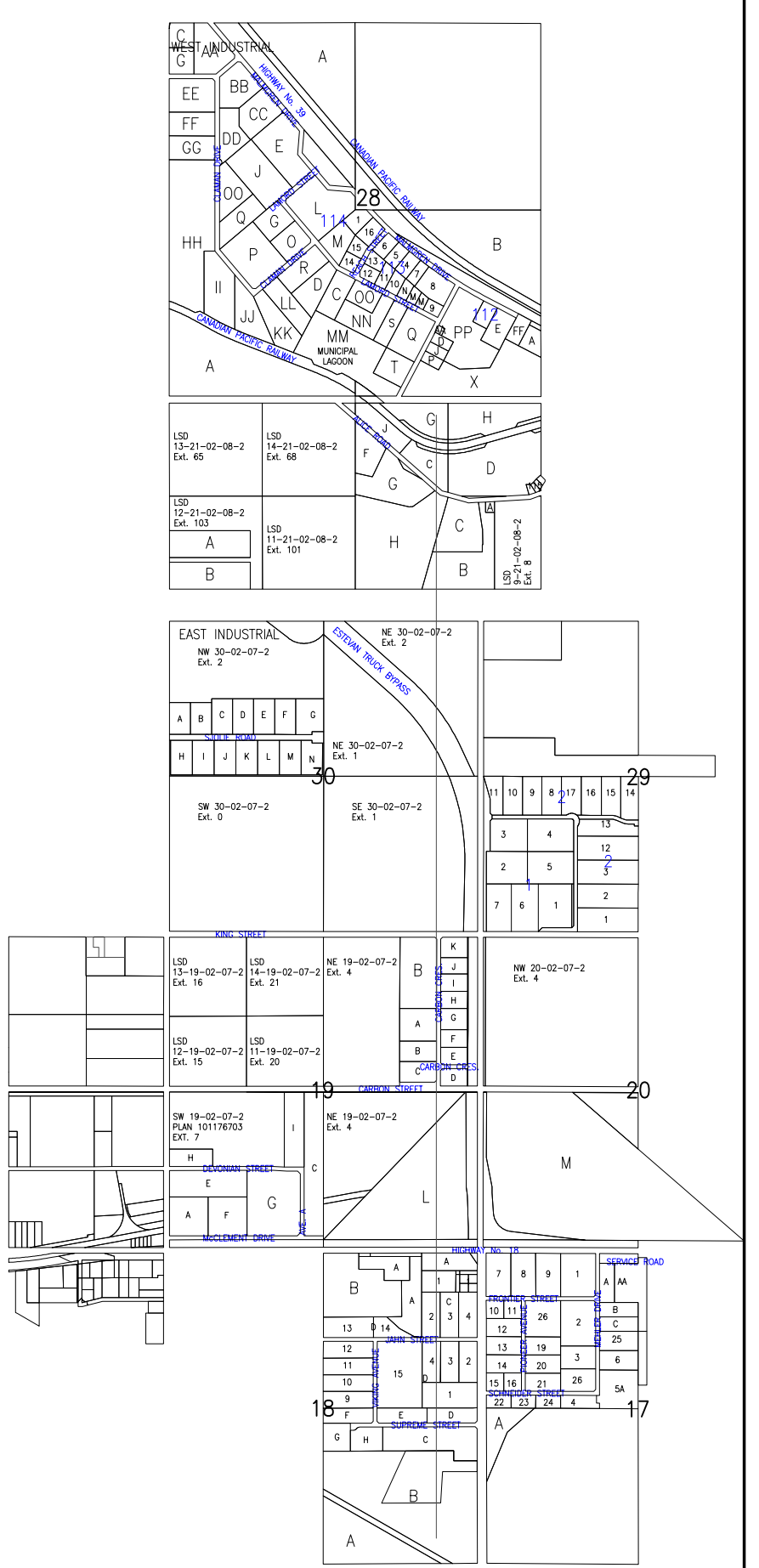
LEGEND

- PROVINCIAL HIGHWAY
- PRIMARY WITH PAVEMENT
- PRIMARY GRID ROAD
- MUNICIPAL ROAD
- GRADED ROAD / SUMMER ROAD
- RAILWAY
- DIVISION LINES
- URBAN
- WATER/SLOUGH
- CO-OP PASTURE
- CROWN
- ORGANIC LAND
- WATER SECURITY
- SASK POWER
- PRAIRIE MINES & ROYALTY
- YARD SITE
- BRIDGE
- CEMETERY
- TOWER
- GRAIN TERMINAL
- AIRPORT
- RESORT
- PICNIC AREA
- MONUMENT
- ALSO OWNS



RESIDENCE LISTING

3010-1-1	3010-1-2	3010-1-3	3010-1-4	3010-1-5	3010-1-6	3010-1-7	3010-1-8	3010-1-9	3010-1-10
3010-2-1	3010-2-2	3010-2-3	3010-2-4	3010-2-5	3010-2-6	3010-2-7	3010-2-8	3010-2-9	3010-2-10
3010-3-1	3010-3-2	3010-3-3	3010-3-4	3010-3-5	3010-3-6	3010-3-7	3010-3-8	3010-3-9	3010-3-10
3010-4-1	3010-4-2	3010-4-3	3010-4-4	3010-4-5	3010-4-6	3010-4-7	3010-4-8	3010-4-9	3010-4-10
3010-5-1	3010-5-2	3010-5-3	3010-5-4	3010-5-5	3010-5-6	3010-5-7	3010-5-8	3010-5-9	3010-5-10
3010-6-1	3010-6-2	3010-6-3	3010-6-4	3010-6-5	3010-6-6	3010-6-7	3010-6-8	3010-6-9	3010-6-10
3010-7-1	3010-7-2	3010-7-3	3010-7-4	3010-7-5	3010-7-6	3010-7-7	3010-7-8	3010-7-9	3010-7-10
3010-8-1	3010-8-2	3010-8-3	3010-8-4	3010-8-5	3010-8-6	3010-8-7	3010-8-8	3010-8-9	3010-8-10
3010-9-1	3010-9-2	3010-9-3	3010-9-4	3010-9-5	3010-9-6	3010-9-7	3010-9-8	3010-9-9	3010-9-10
3010-10-1	3010-10-2	3010-10-3	3010-10-4	3010-10-5	3010-10-6	3010-10-7	3010-10-8	3010-10-9	3010-10-10



INSET SUBDIVISIONS

QUARTER	PARTIAL	OWNER
SW 19-2-7 W2	1/4	WARRISS LIQUIDATION GROUP INC.
SW 19-2-7 W2	1/4	ICON INVESTMENTS - KRM INVESTMENTS
SW 19-2-7 W2	1/4	MANOR HOLDINGS
SW 19-2-7 W2	1/4	GEDDIS CONSTRUCTION
SW 19-2-7 W2	1/4	DAVE WARRISS & TRISH WARRISS
SW 19-2-7 W2	1/4	GEDDIS CONSTRUCTION INC.
SW 19-2-7 W2	1/4	DAVE WARRISS & TRISH WARRISS
SW 19-2-7 W2	1/4	GEDDIS CONSTRUCTION INC.
SW 19-2-7 W2	1/4	DAVE WARRISS & TRISH WARRISS
SW 19-2-7 W2	1/4	GEDDIS CONSTRUCTION INC.

